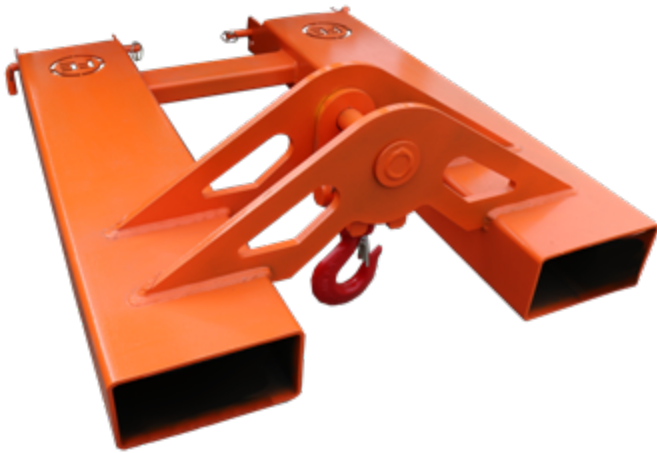


2086-BRIDGED FORK MOUNTED HOOK



The fork mounted load hook enables the conversion of any fork lift unit into a simple mobile crane unit allowing the lifting of items by chains and slings in a secure and safe manner.

The 2086 benefits from a bridged cross beam allowing the unit to lay flat and reducing damage and wear to the bearing swivel hook.

As with all Eichinger fork mounted units the 2086 is secured to the fork lift by a heel pin NOT chain.

All attachments should be used in conjunction with the forklift manufactures data / load plates.

Product Code	Capacity (kg)	Pocket Length (mm)	Pocket Width (mm)	Width (mm)	Max Fork Size (mm)	Weight (kg)
2086.2	2000	940	210	650	160 x 60	45
2086.3	3000	940	210	730	190 x 70	60
2086.5	5000	940	210	730	190 x 70	62

This unit must be used in conjunction with your machines capabilities, please refer to the machine manufacturers guidelines for further information.

Appearance may vary from picture above.

NOTES